

# Racors Pumps

The Company Profile



+91 72000 76755



info@racors.in



www.racorspumps.in

# Table of Contents

Introduction	03
Company Overview	04
Why Choose US	05
Application	07
Products Ranges	09
Gallery	10
Fittings & Accessories	52
Dewatering Projects	57
Contact Us	62

# Introduction



We engage in a broad range of activities, including manufacturing, importing, exporting, trading, and project management. We provide centrifugal pumps, high head pumps, high pressure pumps, high discharge pumps, open well pumps, deep well pumps, and wellpoint pumps with the highest quality and fast delivery.

**27+**

Years of operations

---

**31+**

Countries exporting

---

**620+**

Happy clients

---

**7869+**

Pumps running globally

---

Brand Name & Logo : Racors



**Racors Pumps**  
Private Limited

# Company Overview



## About Us

Racors is recognized as one of the premier manufacturers of dewatering pumps in the Republic of India. Established in the third quarter of 1998, the company specializes in supplying dewatering pumps, pump spares, engine spares, and dewatering accessories for various sectors, including Onshore Land Draining, Marine, Offshore Services, Oil & Gas, pipeline, tunnel, and construction projects.

## Mission

Our objective is to gain the trust and esteem of our customers by striving to deliver high-quality products and services that leverage advanced technology, while fully respecting and safeguarding the privacy of personal and customer information. Our organizational values are based on professionalism, mutual respect, discipline, commitment, and innovation.

## Vision

Our vision is to maintain a leading position in every business we are involved in and to uphold a prominent position in every sector we engage in. We strive to consistently launch superior products and enhanced services that will elevate the standards of business transactions.

## High-Quality Products

Our dewatering pumps are manufactured using only the highest quality materials and components. We are committed to excellence in every product we produce, guaranteeing durability and reliability in even the most challenging environments

## Customized Solutions

We understand that every project is unique, which is why we offer customized dewatering solutions tailored to your requirements. Whether you're dealing with construction site dewatering or wastewater management, we have the expertise and equipment.

## Competitive Pricing

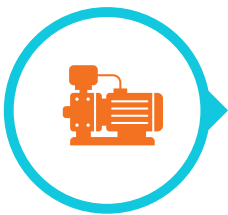
We believe that quality shouldn't come at a premium. Racors offers competitive pricing on all our products and services, providing exceptional value without compromising on quality.

## Exceptional Customer Service

Customer satisfaction is at the heart of everything we do. Our dedicated support team is always ready to assist you, from the initial consultation to after-sales service.

# Why Choose Us

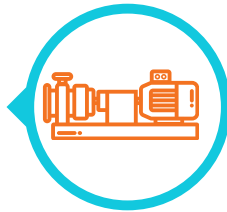
# Our Expertise



**Tailored  
pumping  
solutions**

**Pump selection  
according to  
application**

By choosing the right pump for your application, you ensure not only the success of your project but also efficiency and cost-effectiveness



By choosing Racors for your tailored pumping solutions, you are investing in a partnership that prioritizes your success and satisfaction.



**Research &  
Development**

our commitment to research and development ensures that Racors Dewatering Pumps Company remains a leader in the industry.

**High-performance  
pump systems**



By choosing Racors' high-performance pump systems, you're investing in quality, reliability, and efficiency. Our commitment to excellence guarantees that you receive a pump system that not only meets but exceeds your expectations.

# Industry We serve

Dewatering pumps play a crucial role in various industries by efficiently removing water from construction sites, mines, and other waterlogged areas. Our versatile pumps ensure that work environments remain safe and operational, preventing potential delays caused by flooding or excess water. Below, we explore some of the key industries that benefit from the application of dewatering pumps.



**Construction**



**Oil & Gas**



**Flood Control**



**Mining & Quarry**



**Marine & Offshore**



**Municipalities**

# Application



## Construction

- ✓ Excavation sites
- ✓ Foundation pits
- ✓ Tunnels and subways
- ✓ Road and bridge construction



## Oil & Gas

- ✓ Offshore drilling platforms
- ✓ Onshore oil fields
- ✓ Pipeline dewatering



## Flood Control

- ✓ Retention Basins
- ✓ Canal Systems
- ✓ Temporary Barriers
- ✓ Sandbagging Operations



## Mining & Quarry

- ✓ Open-pit mines
- ✓ Underground mining operations
- ✓ Quarry dewatering



## Environmental

- ✓ Wetland restoration
- ✓ Contaminated site remediation
- ✓ Environmental monitoring and management



## Marine & Offshore

- ✓ Dry Docks
- ✓ Ballast Water Management
- ✓ Bilge Systems



## Agriculture & Irrigation

- ✓ Drainage of waterlogged fields
- ✓ Irrigation systems
- ✓ Water management in aquaculture



## Municipalities

- ✓ Stormwater management
- ✓ Sewage treatment facilities
- ✓ Flood control systems

# " RACORS - THE PUMP "

Pumping Solution



Racors 75-J



Racors-100



Racors-150



Racors 150-SS



Racors 150-HD



Racors 150-OP



Racors 150-VS



Racors 150-S



Racors 150-E



Racors 150-C



Racors 150-PP



Racors 150-F



Racors 150-PC



Racors-200



Racors 200-SY



Racors-300



Racors 300-S



Racors 300W



Racors-350



[ Profile QR ]

# PRODUCTS GALLERY



## PRODUCT RANGES

**2 INCH TO 18 INCH**

120 to 2500 m<sup>3</sup>/hr

Upto 150 Mtr. head

[www.racorspumps.in](http://www.racorspumps.in)

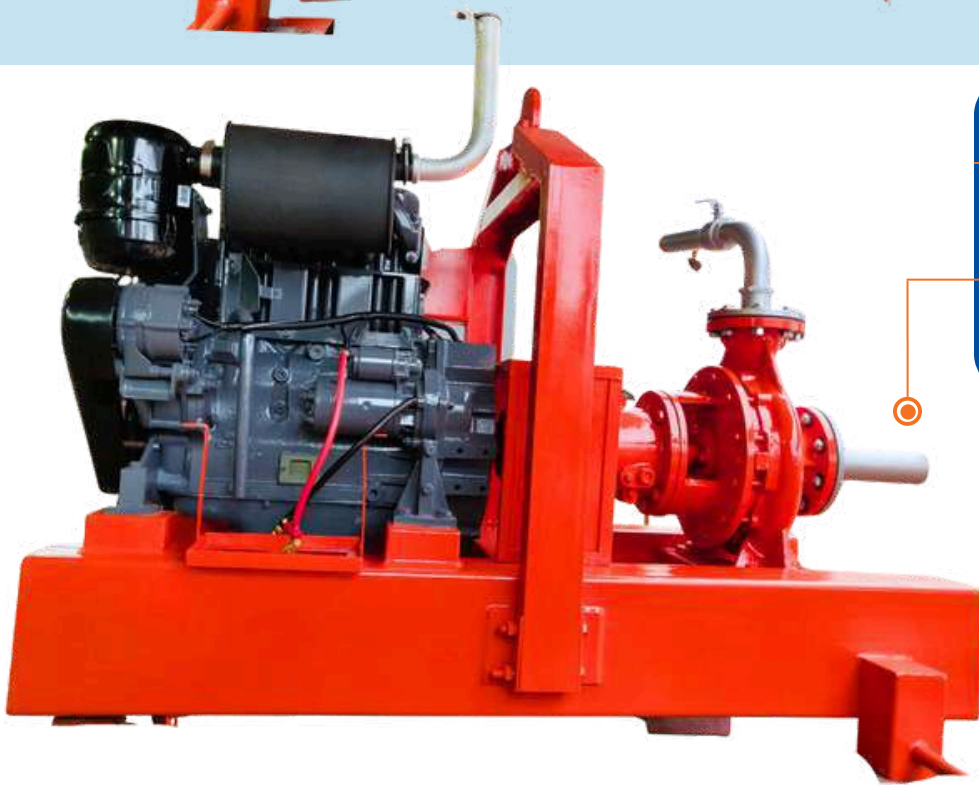
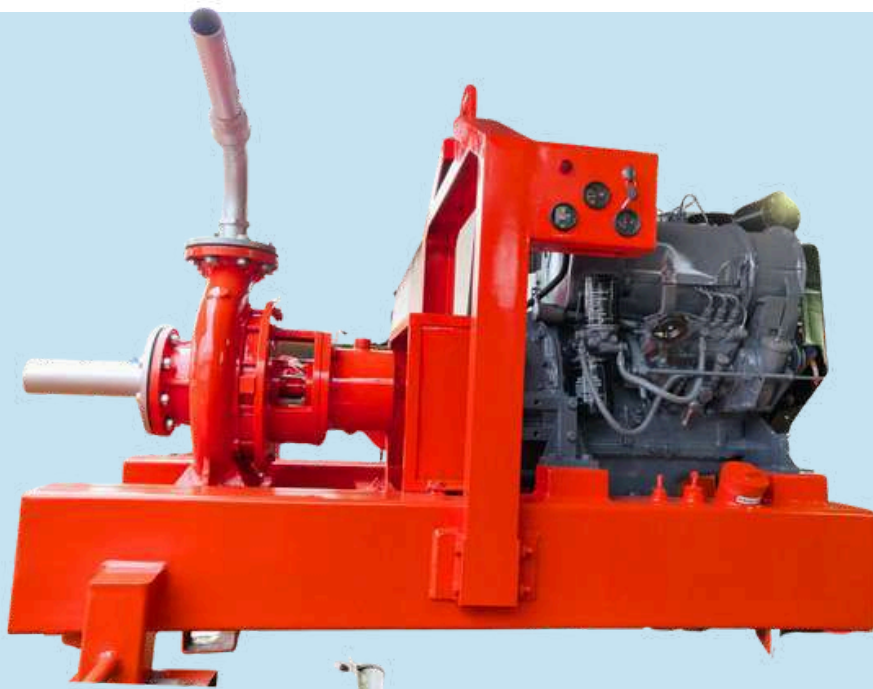
More Details : [info@racors.in](mailto:info@racors.in)

# 3" JETTING PUMP

**Model : Racors - 75J**

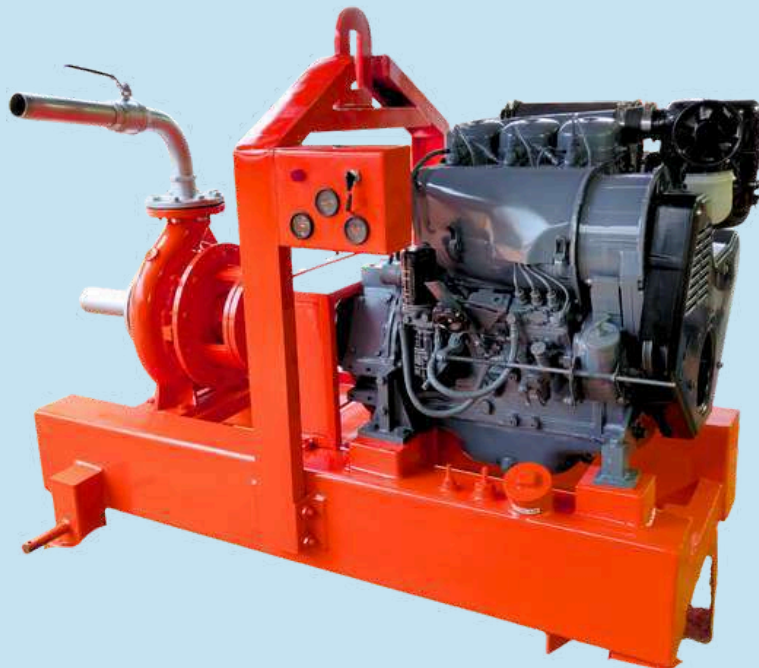
**Application :** Industrial, Agriculture, Oil & Gas, Construction & Civil works, Wellpoint Projects





### 3" Jetting Pump

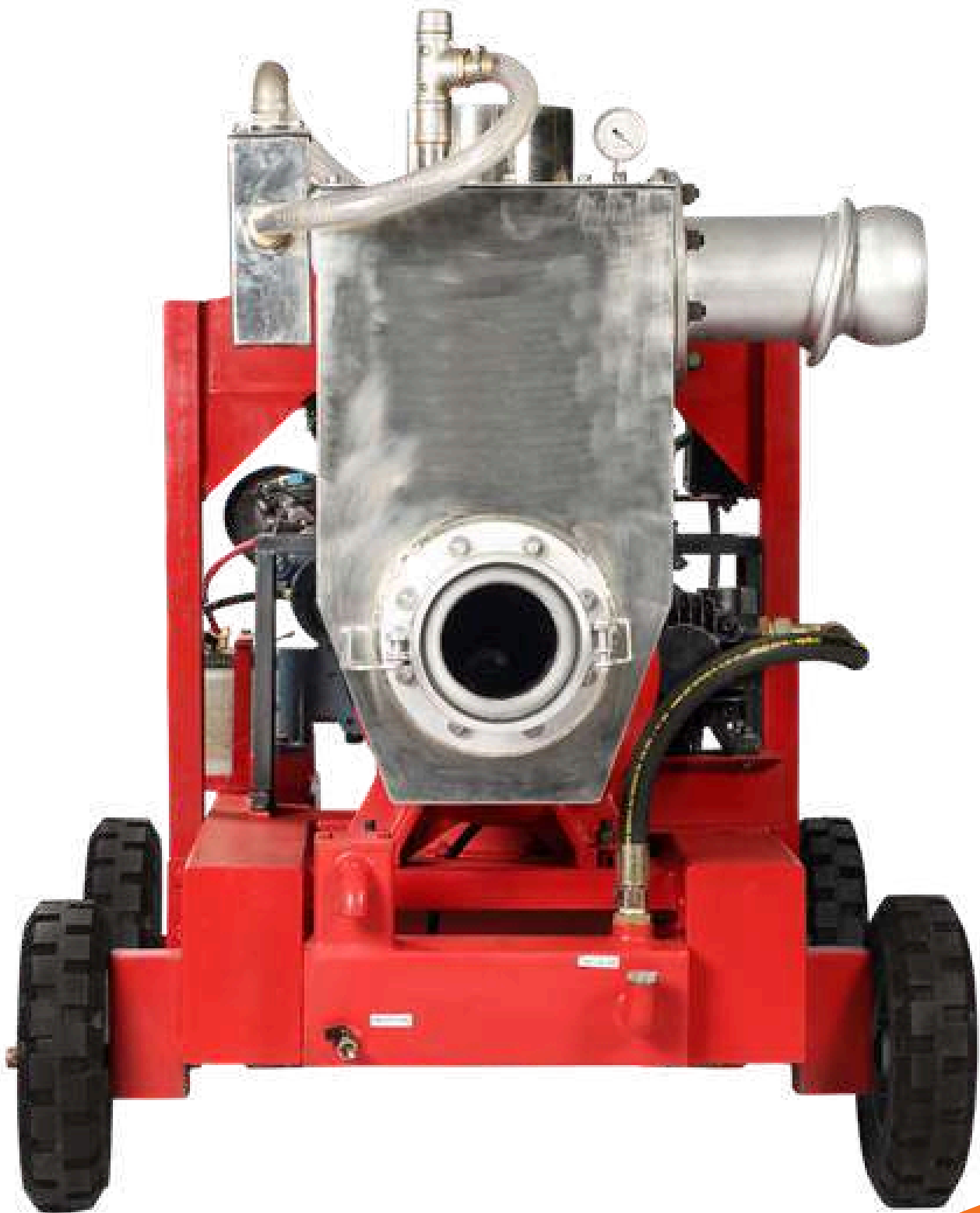
Working Pressure : 6 bar  
Power : 41(HP)  
Weight : 700(Kg)  
Dimension : 222x110x135(Cm)



# 4" DEWATERING PUMP

**Model : Racors - 100**

**Application :** Industrial, Agriculture, Oil & Gas, Sewage & Waste Water, Construction & Civil, Marine & Offshore





### 4" Dewatering Pump

Flow : 200(m<sup>3</sup>/hr)

Head : 40(Mtr)

Power : 32(HP)

Weight : 950(Kg)

Dimension : 222x110x135(Cm)



# 6" DEWATERING PUMP

**Model : Racors - 150**

**Application :** Industrial, Agriculture, Oil & Gas, Sewage & Waste Water, Construction & Civil, Marine & Offshore, Flood Clearing





## 6" Dewatering Pump

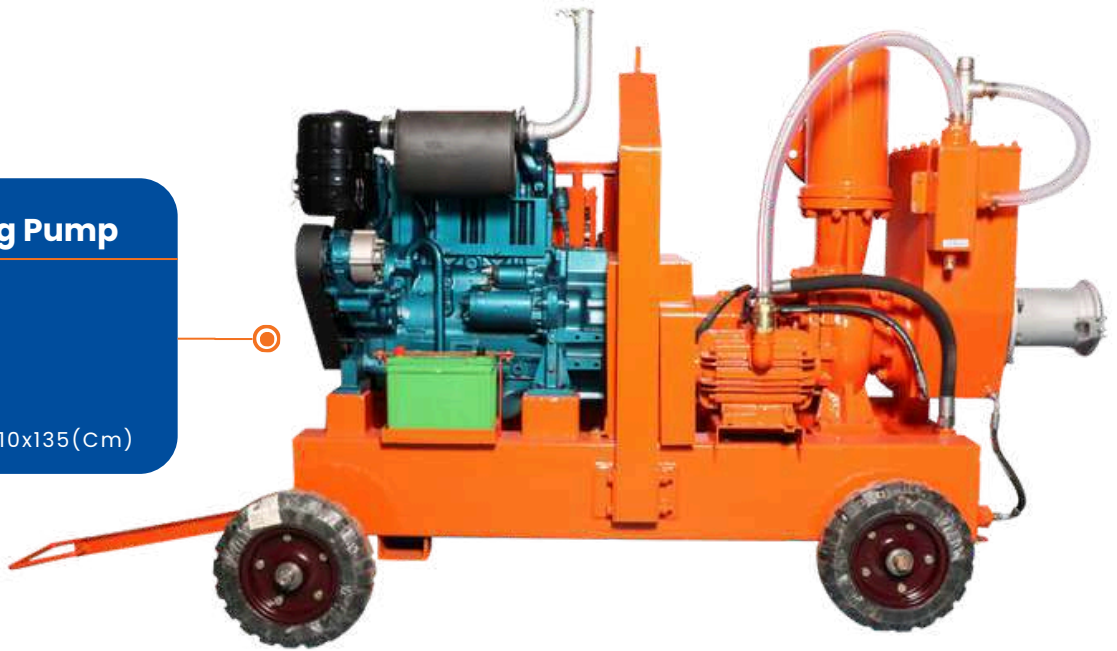
Flow : 350(m<sup>3</sup>/hr)

Head : 40(Mtr)

Power : 38(HP)

Weight : 950(Kg)

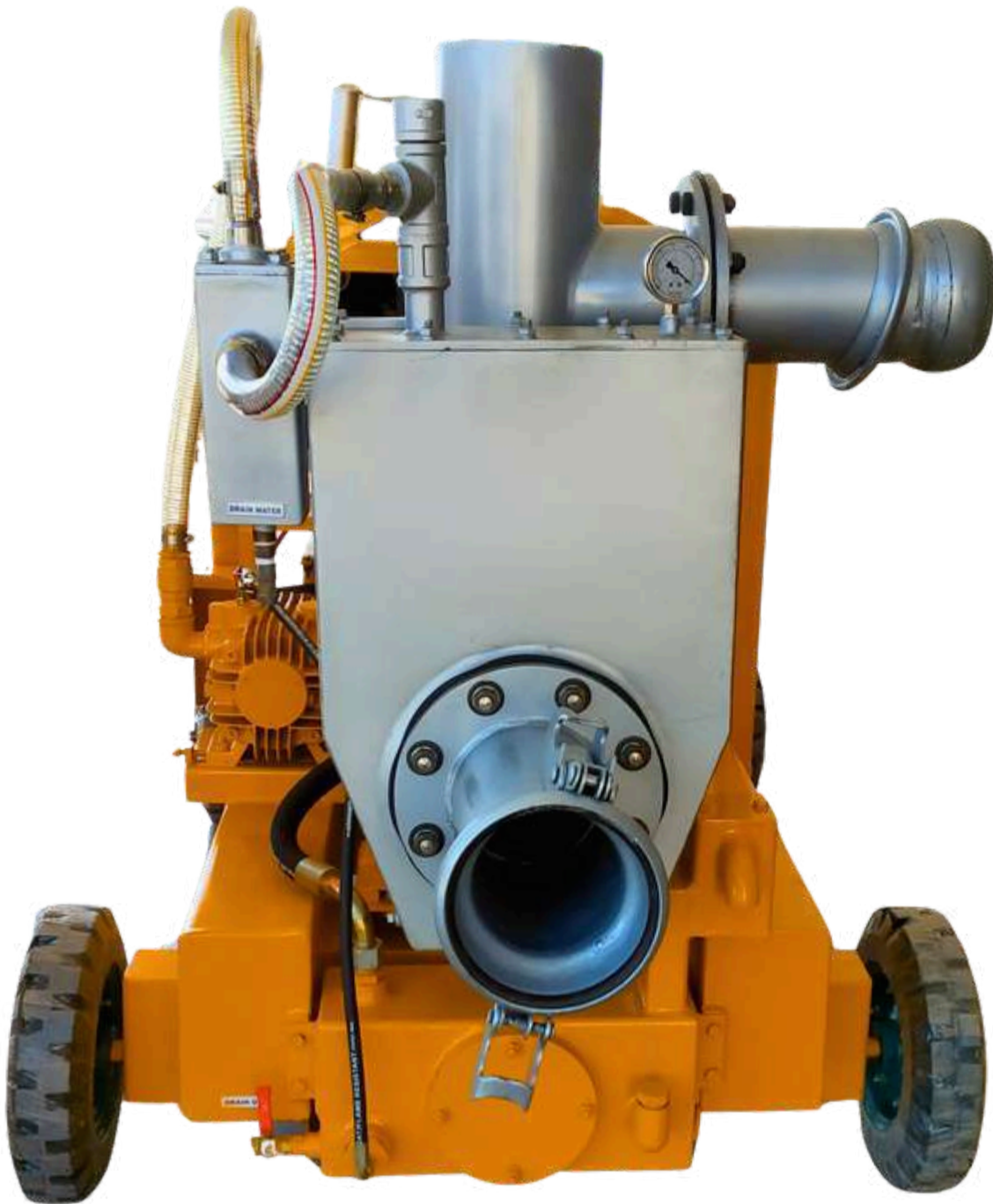
Dimension : 222x110x135(Cm)



# 6" DEWATERING PUMP

**Model : Racors - 150SS**

**Application :** Industrial, Agriculture, Oil & Gas, Sewage & Waste Water, Construction & Civil, Marine & Offshore, Flood Clearing





## 6" SS Dewatering Pump

Flow : 350(m<sup>3</sup>/hr)

Head : 40(Mtr)

Power : 38(HP)

Weight : 950(Kg)

Dimension : 222x110x135(Cm)



# 6" DEWATERING PUMP

**Model : Racors - 150HD**

**Application :** Industrial, Agriculture, Oil & Gas, Sewage & Waste Water, Construction & Civil, Marine & Offshore, Flood Clearing



## 6" HD Dewatering Pump

Flow : 350(m<sup>3</sup>/hr)

Head : 40(Mtr)

Power : 38(HP)

Weight : 950(Kg)

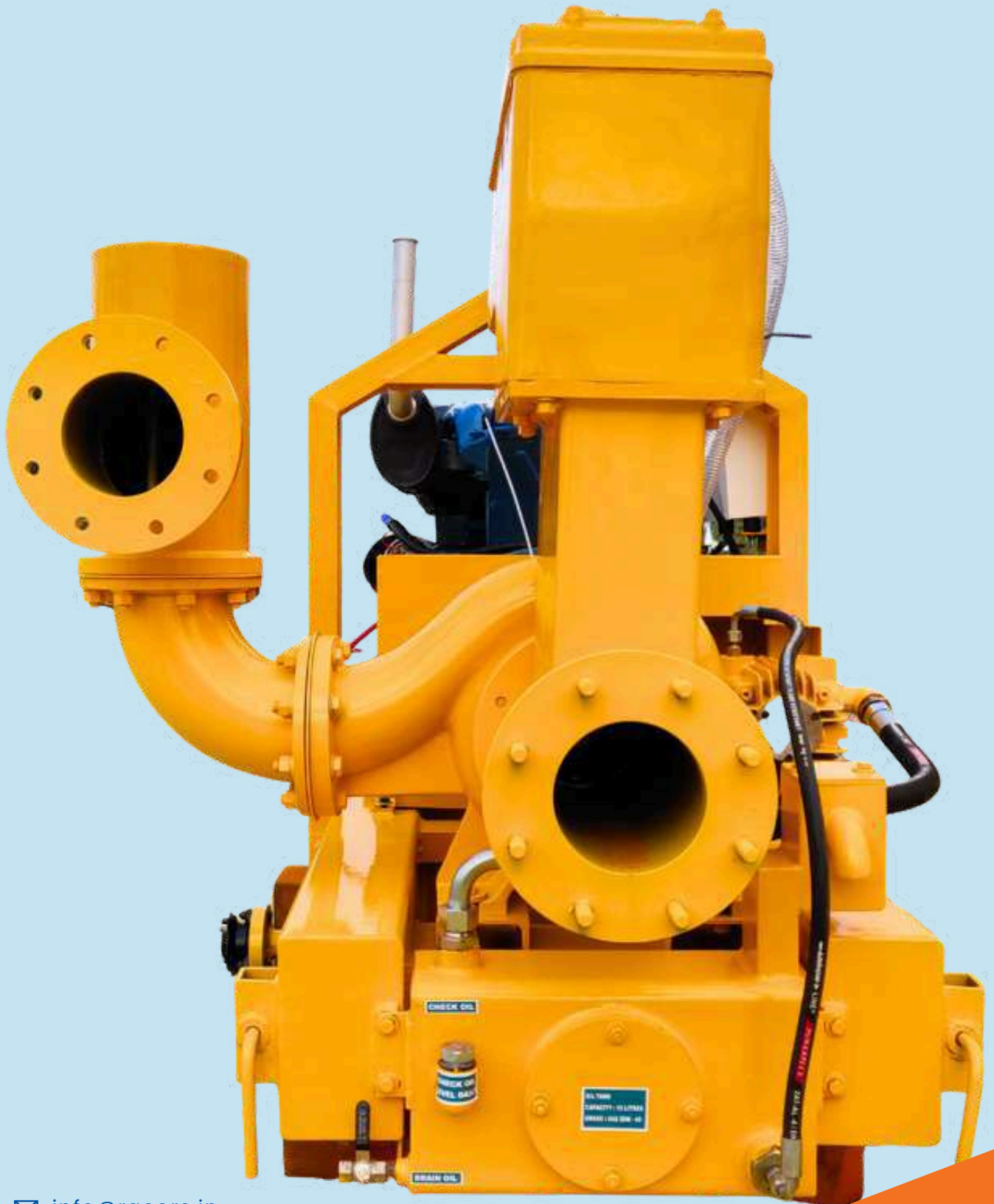
Dimension : 250x130x147(Cm)



# 6" DEWATERING PUMP

**Model : Racors - 150OP**

**Application :** Industrial, Agriculture, Oil & Gas, Sewage & Waste Water, Construction & Civil, Marine & Offshore, Flood Clearing



## 6" OP Dewatering Pump

Flow : 350(m<sup>3</sup>/hr)

Head : 40(Mtr)

Power : 38(HP)

Weight : 950(Kg)

Dimension : 250x130x147(Cm)



# 6" DEWATERING PUMP

**Model : Racors - 150VS**

**Application :** Industrial, Agriculture, Oil & Gas, Sewage & Waste Water, Construction & Civil, Marine & Offshore, Flood Clearing



## 6" VS Dewatering Pump

Flow : 350(m<sup>3</sup>/hr)

Head : 28(Mtr)

Power : 38(HP)

Weight : 950(Kg)

Dimension : 250x130x147(Cm)



# 6" DEWATERING PUMP

**Model : Racors - 150S**

**Application :** Industrial, Agriculture, Oil & Gas, Sewage & Waste Water, Construction & Civil, Marine & Offshore, Flood Clearing





## 6" Dewatering Pump

Flow : 350(m<sup>3</sup>/hr)

Head : 40(Mtr)

Power : 38(HP)

Weight : 950(Kg)

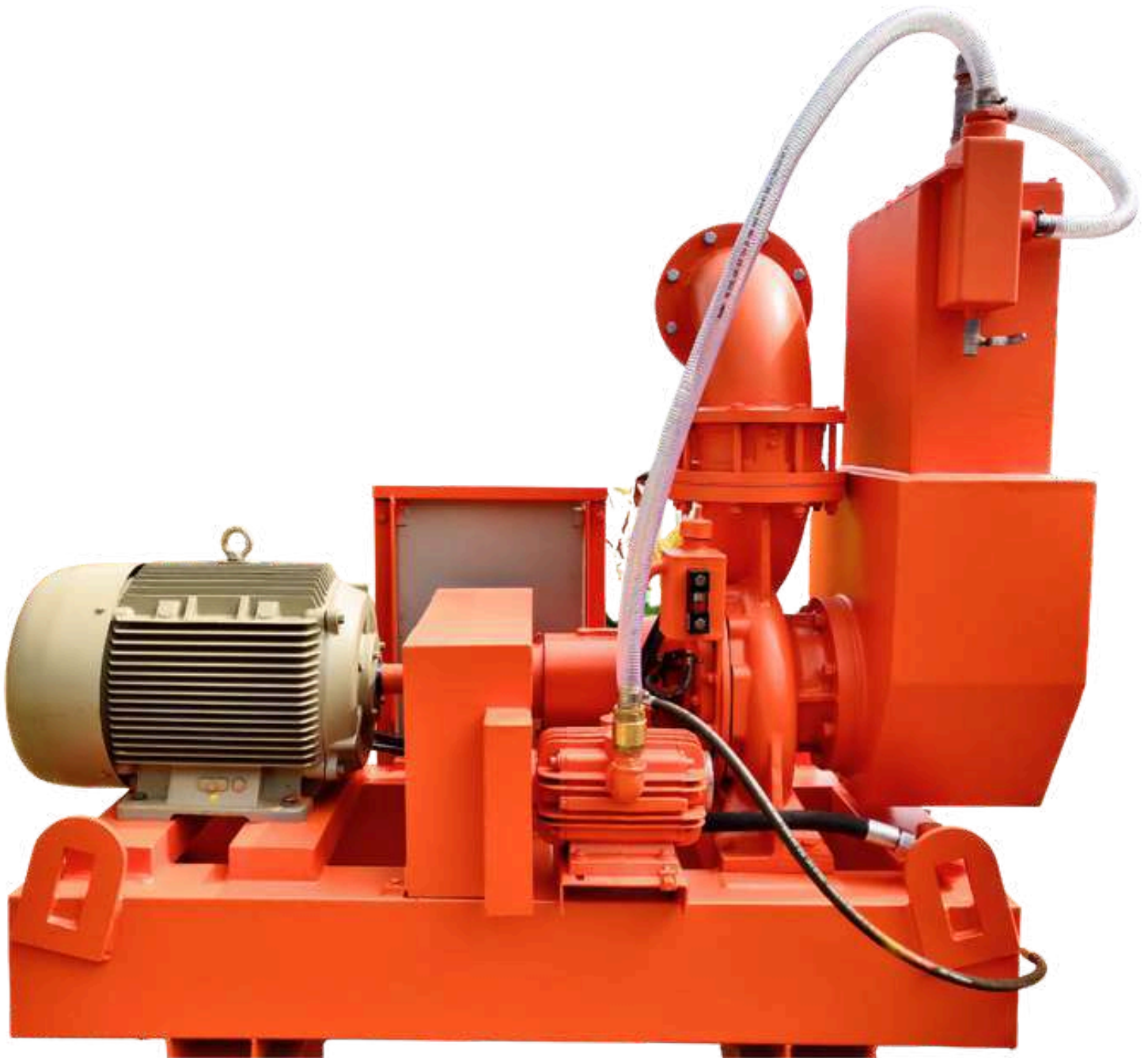
Dimension : 222x110x135(Cm)

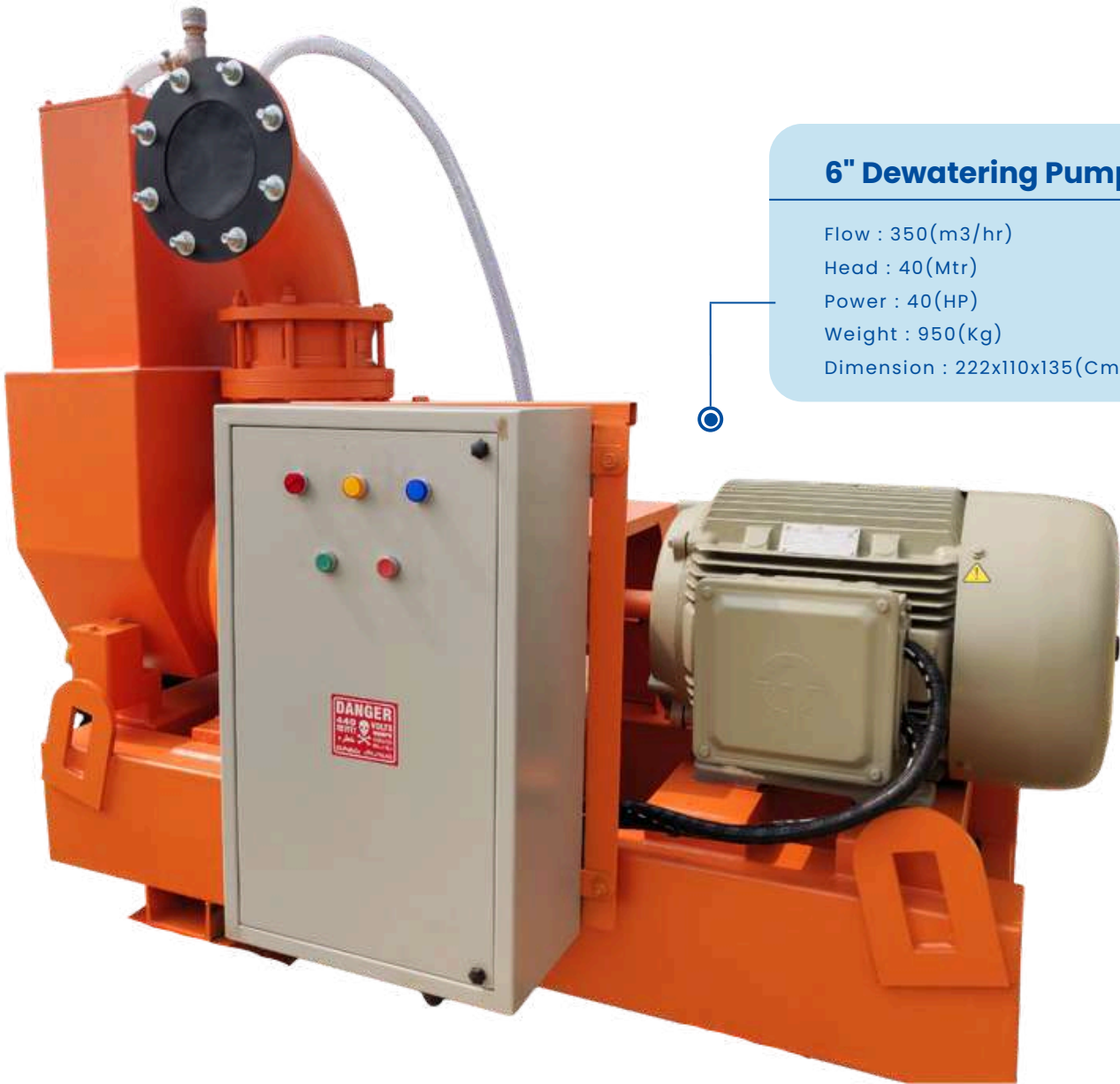


# 6" ELECTRIC PUMP

**Model : Racors - 150E**

**Application :** Industrial, Agriculture, Oil & Gas, Sewage & Waste Water, Construction & Civil, Mining & Quarries





## 6" Dewatering Pump

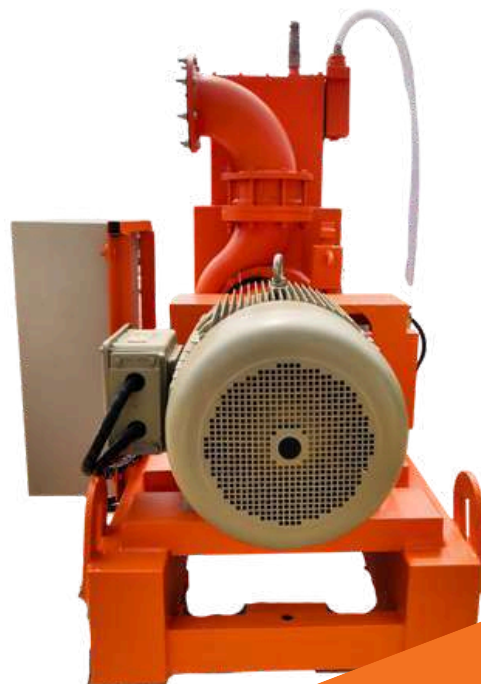
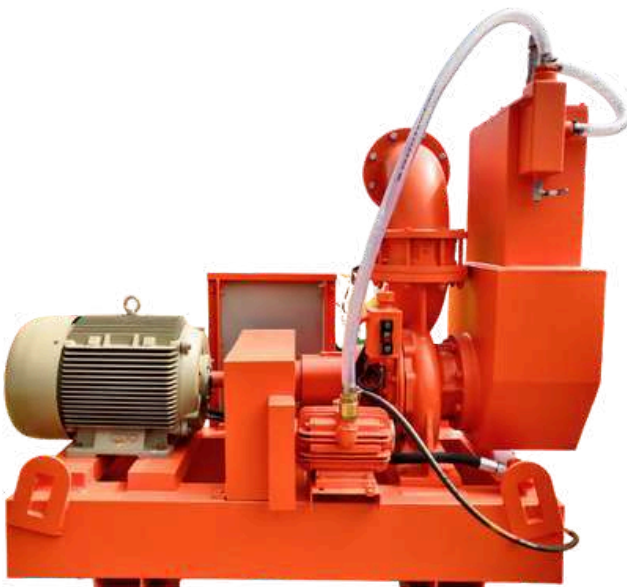
Flow : 350(m<sup>3</sup>/hr)

Head : 40(Mtr)

Power : 40(HP)

Weight : 950(Kg)

Dimension : 222x110x135(Cm)



# 6" DEWATERING PUMP WITH FRAME

**Model : Racors - 150F**

**Application :** Industrial, Agriculture, Oil & Gas, Sewage & Waste Water, Construction & Civil, Mining & Quarries, Marine & Offshore, Flood Clearing



## 6" Dewatering Pump Frame

Flow : 350(m<sup>3</sup>/hr)

Head : 40(Mtr)

Power : 38(HP)

Weight : 1250(Kg)

Dimension : 230x130x150(Cm)



# 6" CANOPY DEWATERING PUMP





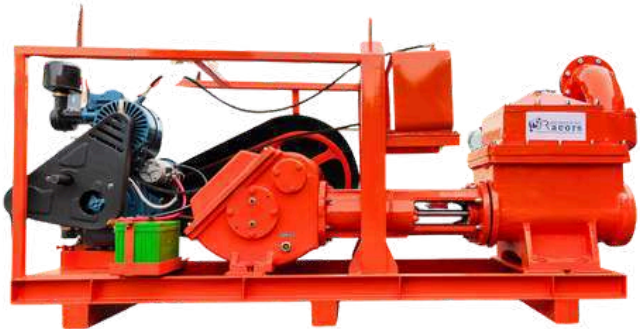
### 6" Dewatering Pump With Canopy

Flow : 350(m<sup>3</sup>/hr)  
Head : 40(Mtr)  
Power : 61(HP)  
Weight : 2050(Kg)  
Dimension : 295x131x176(Cm)



# RECIPROCATING PISTON PUMP





## 6" Piston Pump

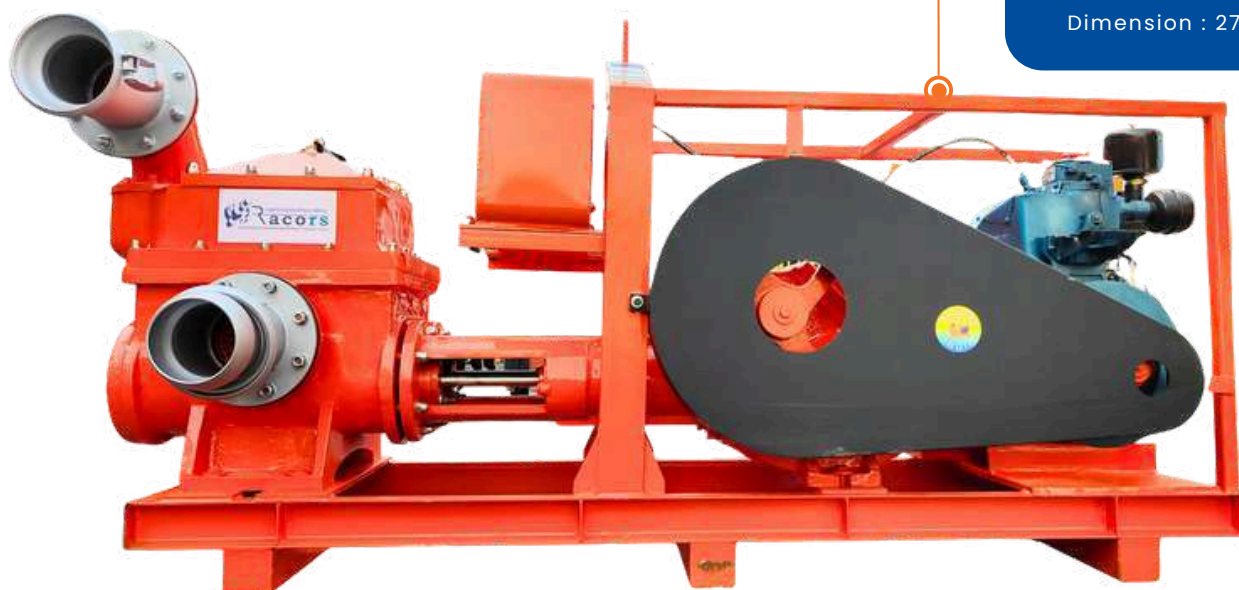
Flow : 100(m<sup>3</sup>/hr)

Head : 20(Mtr)

Power : 10(HP)

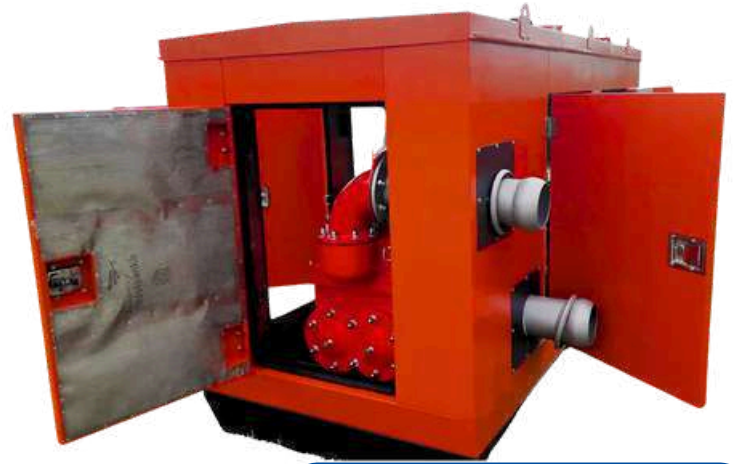
Weight : 1600(Kg)

Dimension : 275x67x135(Cm)



# PISTON CANOPY





### 6" Piston Pump with Canopy

Flow : 100(m<sup>3</sup>/hr)

Head : 20(Mtr)

Power : 10(HP)

Weight : 2050(Kg)

Dimension : 295x131x176(Cm)



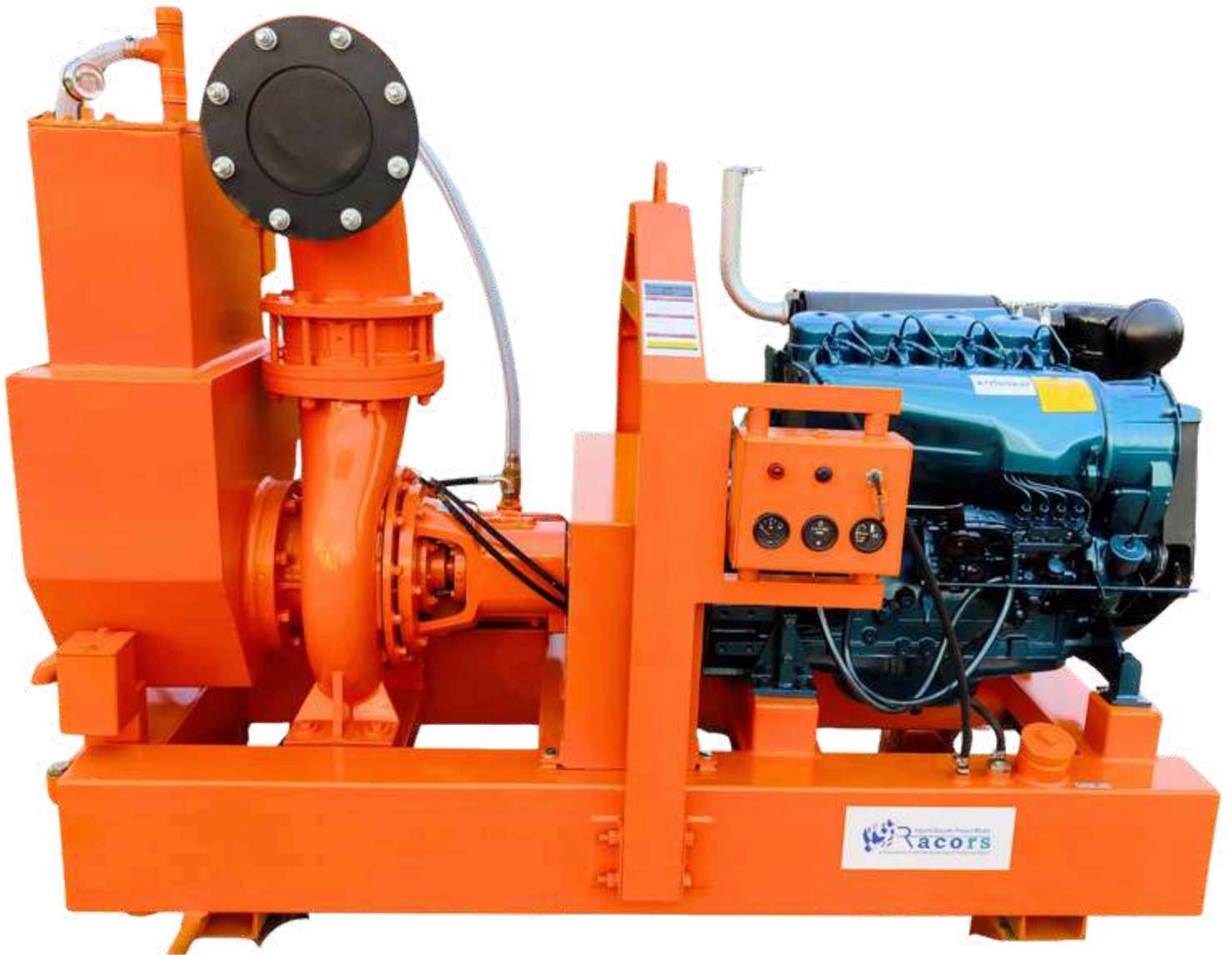
Racors - The Pump  
+91 72000 76755  
www.racorpumps.in



# 8" DEWATERING PUMP

**Model : Racors - 200**

**Application :** Industrial, Oil & Gas, Sewage & Waste Water, Construction & Civil, Mining & Quarries, Marine & Offshore, Flood Clearing





## 8" Dewatering Pump

Flow : 550(m<sup>3</sup>/hr)

Head : 40(Mtr)

Power : 52(HP)

Weight : 1250(Kg)

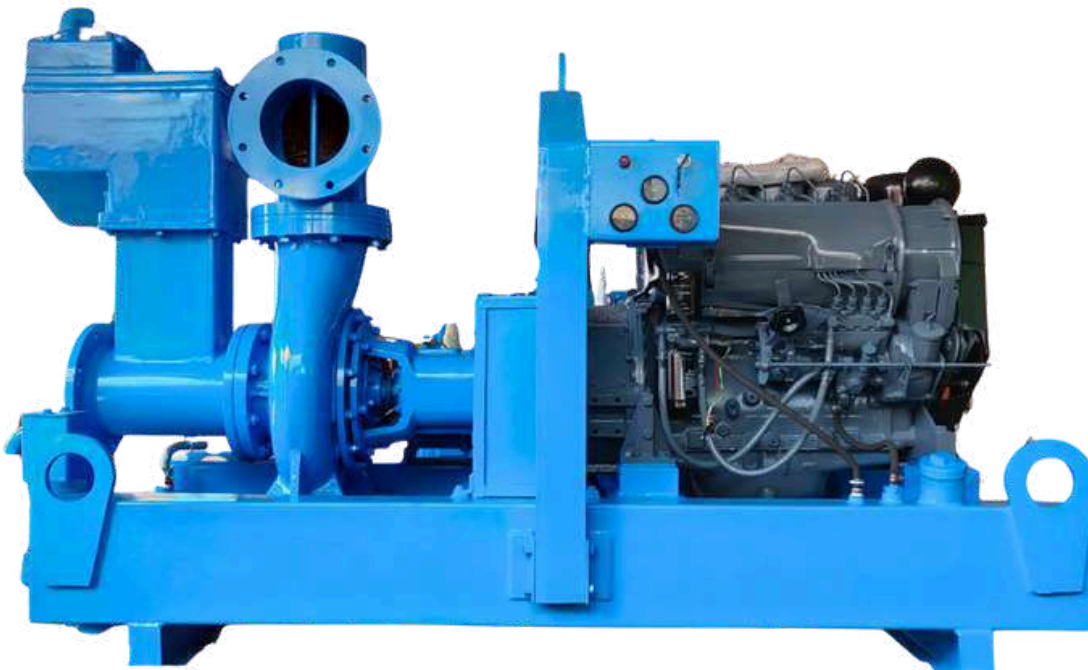
Dimension : 230x125x165(Cm)



# 8" DEWATERING PUMP

**Model : Racors-200 SY**

**Application :** Industrial, Oil & Gas, Sewage & Waste Water, Construction & Civil, Mining & Quarries, Marine & Offshore, Flood Clearing



## 8" SY Dewatering Pump

Flow : 550(m<sup>3</sup>/hr)

Head : 40(Mtr)

Power : 52(HP)

Weight : 1250(Kg)

Dimension : 240x135x165(Cm)

# 8" ELECTRIC PUMP

**Model : Racors - 200E**

**Application :** Industrial, Agriculture, Oil & Gas, Sewage & Waste Water, Construction & Civil, Mining & Quarries, Marine & Offshore, Flood Clearing





## 8" Dewatering Pump with Electric Motor

Flow : 550(m<sup>3</sup>/hr)

Head : 40(Mtr)

Power : 60(HP)

Weight : 1250(Kg)

Dimension : 230x125x165(Cm)



# 12" DEWATERING PUMP

**Model : Racors - 300**

**Application :** Industrial, Oil & Gas, Sewage & Waste Water, Construction & Civil, Mining & Quarries, Marine & Offshore, Flood Clearing



## 12" Dewatering Pump

Flow : 1250(m<sup>3</sup>/hr)

Head : 40(Mtr)

Power : 78(HP)

Weight : 2250(Kg)

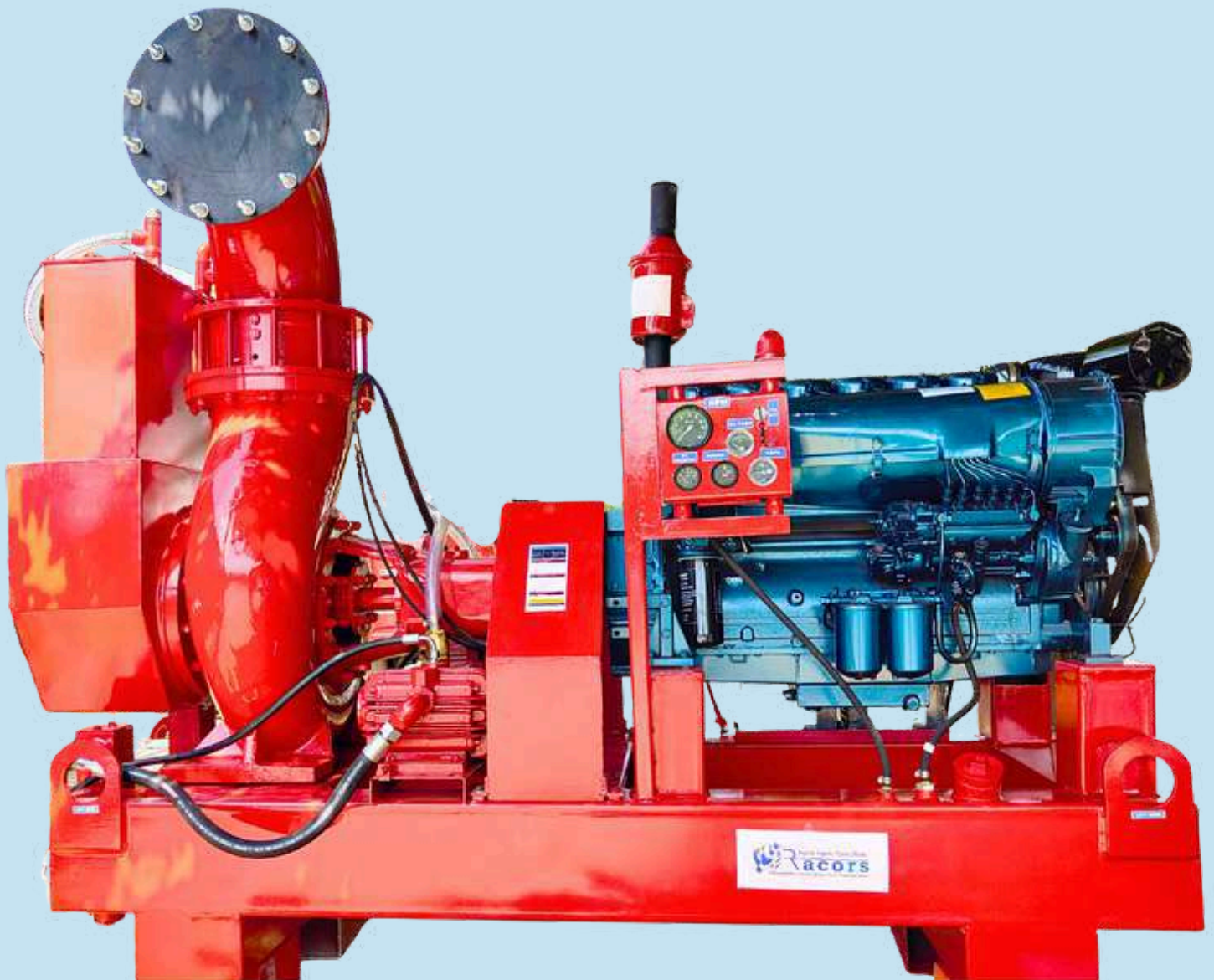
Dimension : 280x100x210(Cm)



# 12" DEWATERING PUMP

**Model : Racors - 300S**

**Application :** Industrial, Oil & Gas, Sewage & Waste Water, Construction & Civil, Mining & Quarries, Marine & Offshore, Flood Clearing



## 12" Dewatering Pump

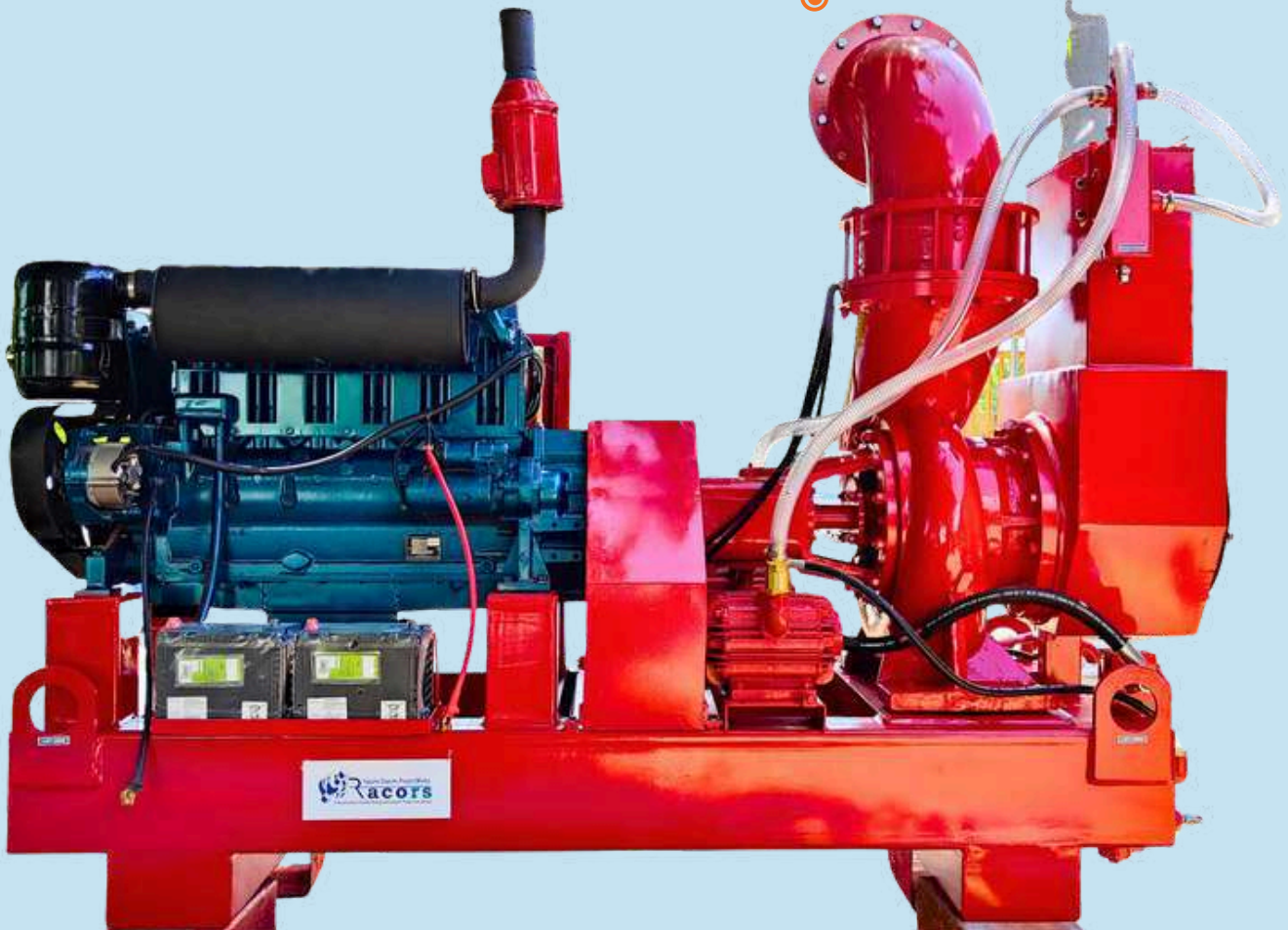
Flow : 1250(m<sup>3</sup>/hr)

Head : 40(Mtr)

Power : 78(HP)

Weight : 2100(Kg)

Dimension : 280x105x210(Cm)



# 12" DEWATERING PUMP

**Model : Racors - 300W**

**Application :** Industrial, Oil & Gas, Sewage & Waste Water, Construction & Civil, Mining & Quarries, Marine & Offshore, Flood Clearing



## 12" Dewatering Pump

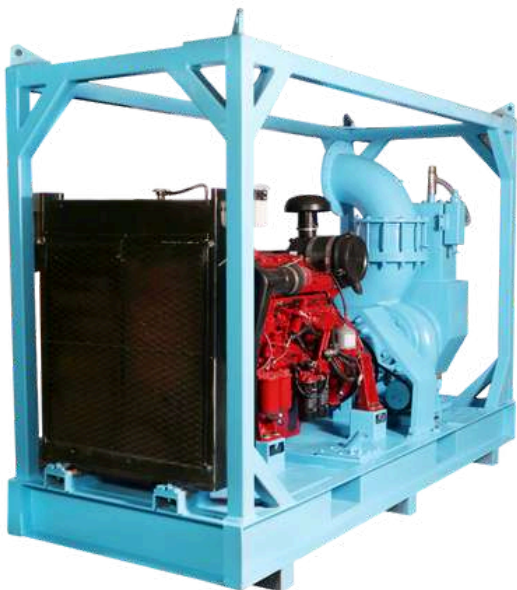
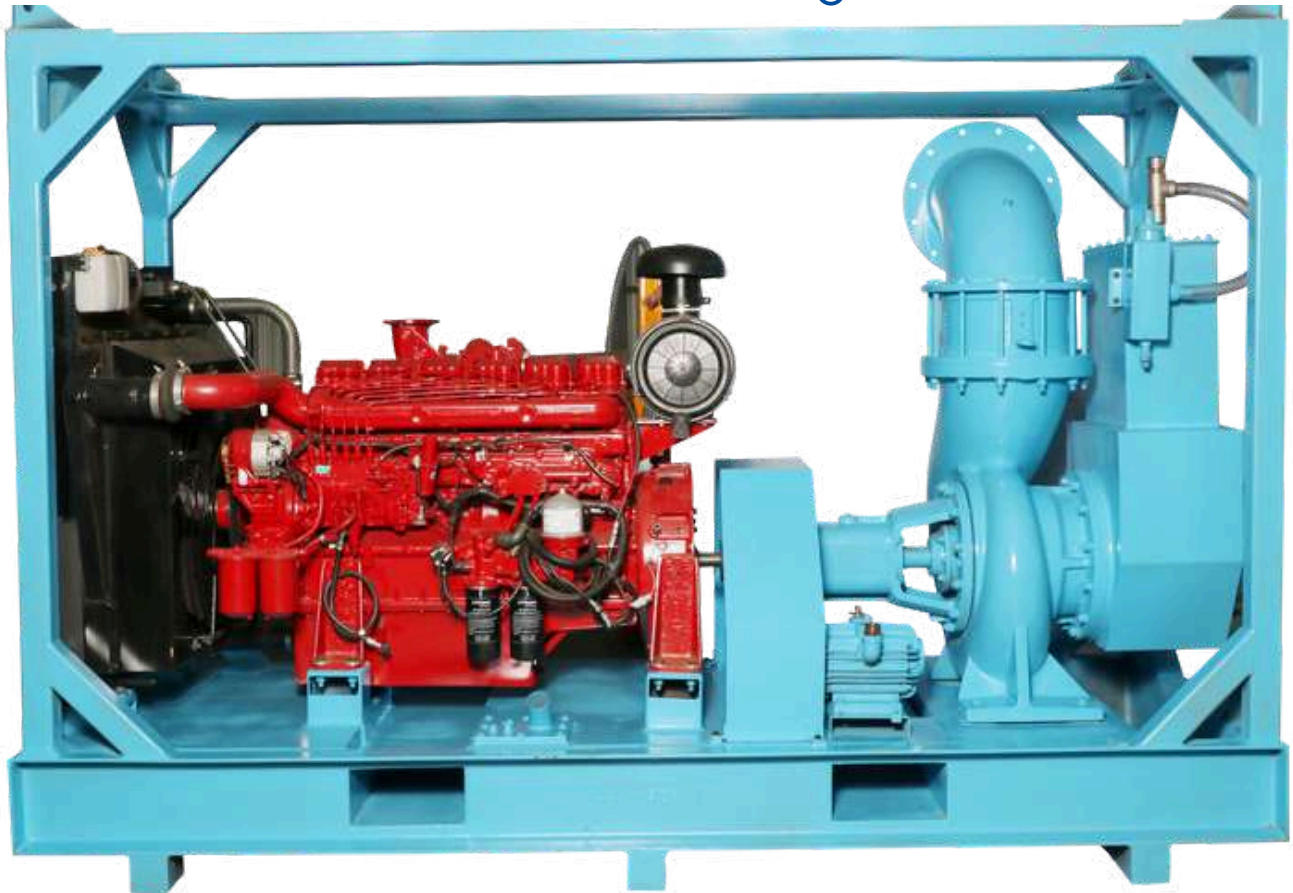
Flow : 1250(m<sup>3</sup>/hr)

Head : 40(Mtr)

Power : 133(HP)

Weight : 3000(Kg)

Dimension : 305x106x229(Cm)



# 12" DEWATERING PUMP

**Model : Racors - 300W**

**Application :** Industrial, Oil & Gas, Sewage & Waste Water, Construction & Civil, Mining & Quarries, Marine & Offshore, Flood Clearing



## 12" Dewatering Pump

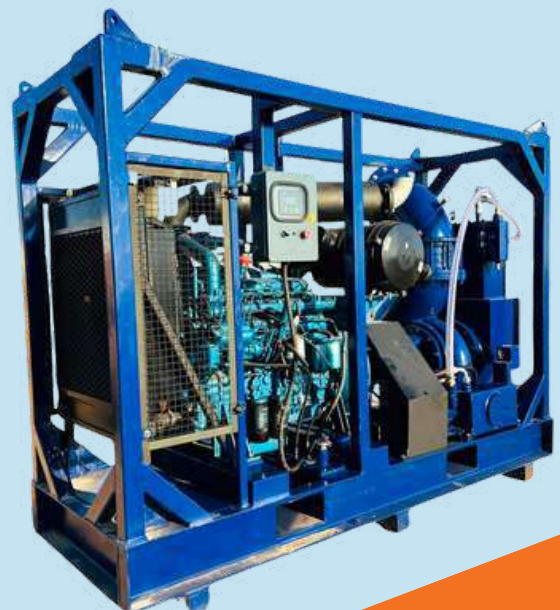
Flow : 1250(m<sup>3</sup>/hr)

Head : 40(Mtr)

Power : 133(HP)

Weight : 3000(Kg)

Dimension : 305x106x229(Cm)



# 14" DEWATERING PUMP

**Model : Racors - 350**

**Application :** Industrial, Oil & Gas, Sewage & Waste Water, Construction & Civil, Mining & Quarries, Marine & Offshore, Flood Clearing





## 14" Dewatering Pump

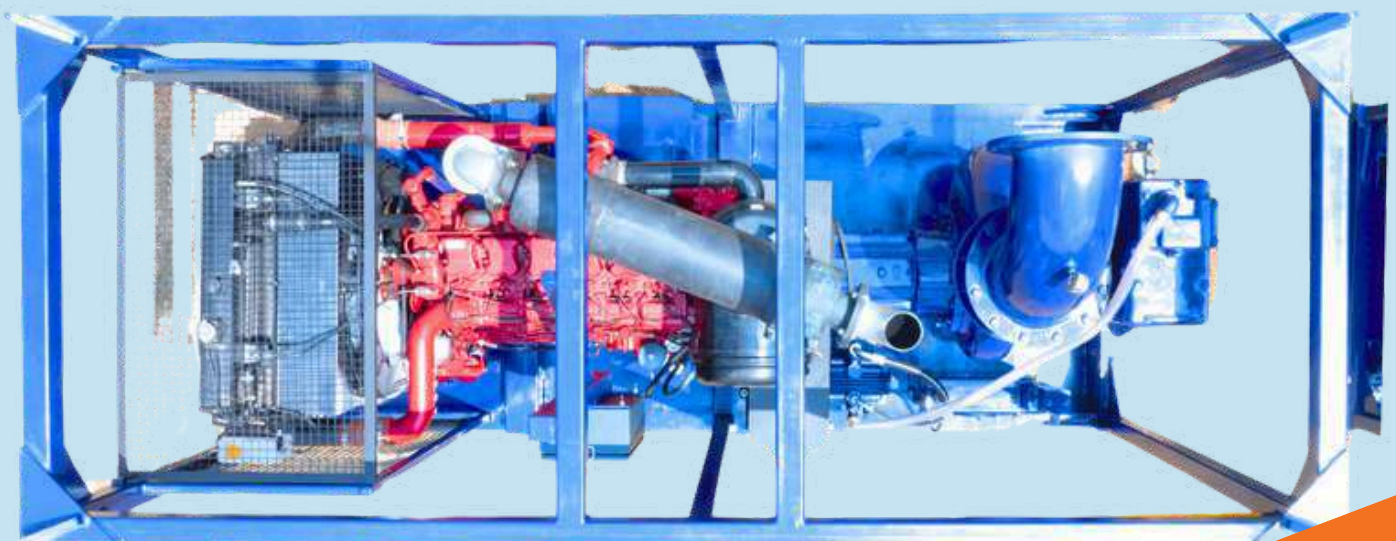
Flow : 1500(m<sup>3</sup>/hr)

Head : 40(Mtr)

Power : 313(HP)

Weight : 3960(Kg)

Dimension : 365x152x252(Cm)



# FITTINGS & ACCESSORIES



**COMPLETE DEWATERING  
PUMPS SPARES &  
ACCESSORIES AVAILABLE**

More Details : [info@racors.in](mailto:info@racors.in)  
[www.racorspumps.in](http://www.racorspumps.in)



**6 inch male flange fittings**



**6 inch female flange fittings**



**6 inch female hose fittings**



**6 inch bauer coupling**



**6 inch male hose fittings**



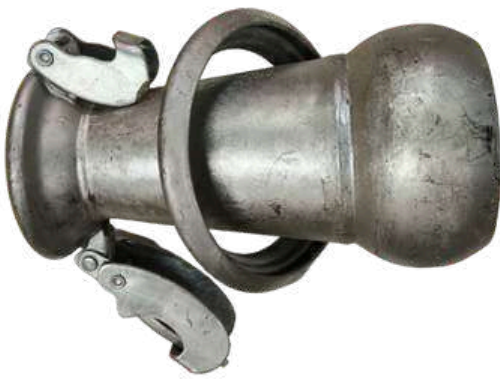
**6 inch strainer**



**6 inch T joint**



**6 inch Y joint**



**6 by 4 inch reducer**



**6 inch end cap**



**45 degree bend**



**90 degree bend**



**Header Pipes**



**2" swing hose with fitting**



**2" x 7mtr PVC Wellpoint**



**6 inch layflat hose**



**6 inch suction hose**



**Dewatering Pump Spares & Engine Parts**

# DEWATERING PROJECTS



**DEWATERING PUMPS  
SALES / RENTALS /  
PROJECTS GLOBALLY**

More Details : [info@racors.in](mailto:info@racors.in)  
[www.racorspumps.in](http://www.racorspumps.in)









# Racors Pumps Pvt Ltd



**"Racors- The Pump"**

## Contact Us

-  Phone **+91 72000 76755 / +91 75400 86755**
-  E-mail **info@racors.in / racors.racors@gmail.com**
-  Website **www.racorspumps.in / www.racors.in**
-  Social Media **       @racorspumps**
-  Office **S.F NO. 475/1A, Uliyampalayam, Dhaliyur Road, Coimbatore - 641109, Tamilnadu, The Republic of India.**